

Respireo **SOFT**

Child

Respireo **SOFT**

Baby

For Healthcare Professionals Only



For a real child's life

# Learn more about our Paediatric masks



**Respireo™ SOFT Baby 3 to 12 kg**  
(approx. NB to 18 months)\*

Suitable for both chronic situations at home and acute situations in the hospital, the Respireo™ SOFT Paediatrics range is an innovative and easy-to-use range. Specially designed to adapt to the bone structure and fragile skin of children and infants, these masks and the headgear provide an even distribution of pressure points and a secure fit. These masks allow the children to move and play comfortably on a daily basis.

**Respireo™ SOFT Child 12 to 25 kg**  
(approx. 18 months to 7 years)\*

## 5-point connection headgear

Evenly distributes the pressure points on the head, ensuring stability and comfort

- 3 sizes **XXS, XS and S** for **SOFT Baby**
- **Single size** for **SOFT Child**

## Ultra-thin cushion

Provides a customized fit for the child's anatomy while ensuring an optimal seal

- 1 specific size for **SOFT Baby**
- 1 specific size for **SOFT Child**

## Attachment system on the SOFT Baby

guarantees infant safety and successful execution of the treatment

## Hooks system on the SOFT Child

allow older children to use the mask independently and maintain headgear adjustments

Also available in  
**Non Vented version**



## Flexible silicone frame

Reduces pressure points by avoiding any rigid parts in contact with the skin

## External port

Facilitates hospital treatment (vital parameters measurements, etc.)

## A 360° rotating elbow

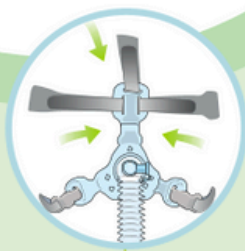
For a complete freedom of movement during sleep



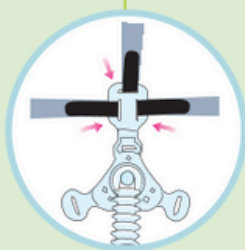
# How to put on the mask



Respireo **SOFT**  
Child



Respireo **SOFT**  
Baby

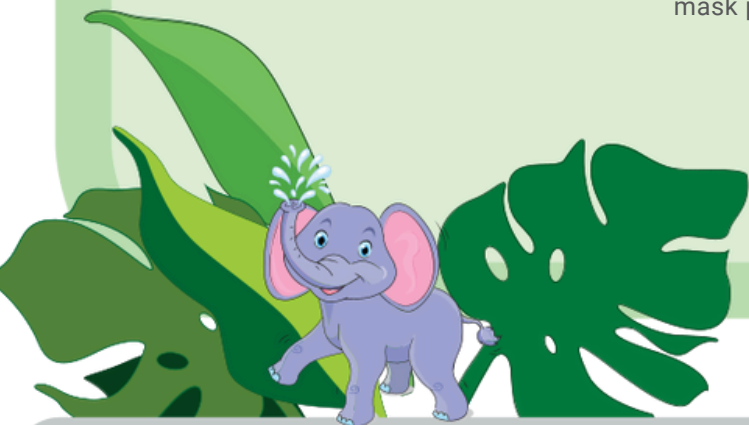


Attach the three upper straps of the headgear to the mask frame and then connect the tube.

Position the cushion on the child's nose and pass the headgear over the head to place the mask properly.

Adjust the headgear. Be careful not to tighten it too much. The cushion should not cover the mouth.

The mask is ready for use. Connect the tube to the ventilator. If leaks or pressure points occur during the ventilation, please make headgear adjustments.



## How to take care of the mask

### DAILY CLEANING OF THE MASK FOR SINGLE PATIENT USE

**N.B.** The headgear should be cleaned once a week and all the other components every day.

Before cleaning the mask, wash your hands thoroughly.

Disassemble all the components and wash carefully in warm water at about 30°C, using mild soap.

Rinse thoroughly under the tap and leave in the air to dry, but not in direct sunlight.

### REPROCESSING THE MASK FOR MULTI-PATIENT USE

**N.B1.** The mask must always be regenerated before being used by another patient.

**N.B2.** The headgear must be replaced each time. **N.B3.** In case of thermal disinfection and autoclave sterilization, the tube assembly must be replaced.

The mask can be regenerated up to 12 times, using one of the following methods:

- high-level thermal disinfection;
- high-level chemical disinfection;
- sterilisation in an autoclave at 121°C for no more than 30 minutes.

## References

Product Reference	ITEM DESCRIPTION	Size
<b>SOFT BABY MASK</b>		
6998S	Respireo™ SOFT Baby Vented	XXS
6957S	Respireo™ SOFT Baby Vented	XS
6958S	Respireo™ SOFT Baby Vented	S
6959S	Respireo™ SOFT Baby Non Vented	XS
6960S	Respireo™ SOFT Baby Non Vented	S
<b>SOFT BABY SPARE PARTS</b>		
6961S	Headgear Respireo™ SOFT Baby	XXS
6962S	Headgear Respireo™ SOFT Baby	XS
6963S	Headgear Respireo™ SOFT Baby	S
<b>SOFT CHILD MASK</b>		
6966S	Respireo™ SOFT Child Vented	One Size
6967S	Respireo™ SOFT Child Non Vented	One Size
<b>SOFT CHILD SPARE PARTS</b>		
6968S	Headgear Respireo™ SOFT Child	One Size
6964S	Paediatric Vented tube assembly (BOX x 10)	na
6965S	Paediatric Non Vented tube assembly (BOX x 10)	na

Respireo™ SOFT Child is a reusable nasal mask with calibrated exhalation orifices (Vented), intended to be used at home or in a hospital setting by multiple paediatric patients (weighing between 12 and 25 kg) who have been prescribed for a non-invasive positive pressure ventilation therapy (NIPPV), e.g. continuous positive airway pressure therapy (CPAP) or Bilevel positive airway pressure therapy (BiPAP). Respireo™ SOFT Child Non Vented is a reusable nasal mask without calibrated exhalation orifices intended to be used at home or in a hospital setting by multiple paediatric patients (weighing between 12 and 25 kg) in controlled non- invasive positive pressure ventilation (NIPPV). Respireo™ SOFT Baby is a reusable nasal mask with calibrated exhalation orifices (Vented), intended to be used at home or in a hospital setting by multiple paediatric patients (weighing between 3 and 12 kg) who have been prescribed for a non-invasive positive pressure ventilation therapy (NIPPV), e.g. continuous positive airway pressure therapy (CPAP) or Bilevel positive airway pressure therapy (BiPAP). Respireo™ SOFT Baby Non Vented is a reusable nasal mask without calibrated exhalation orifices intended to be used at home or in a hospital setting by multiple paediatric patients (weighing between 3 and 12 kg) in controlled non- invasive positive pressure ventilation (NIPPV). Medical device class IIb. **Please read the user manual & use only as directed.**

Manufactured by  
AIR LIQUIDE MEDICAL SYSTEMS S.r.l Via  
Bisceglie, 66 - 20152 Milano (MI) - ITALY PLANT:  
Via dei Prati, 62 - 25073 Bovezzo (BS) - ITALY  
PH: +39 030.201.59.11 Fax +39 030.209.83.29  
medicaldevice.airliquide.com

Distributed by  
Air Liquide Healthcare Australia  
4 / 270 Lahrs Road ORMEAU QLD 4208  
Ph: 1300 36 02 02  
E: sleepsupport@airliquide.com